

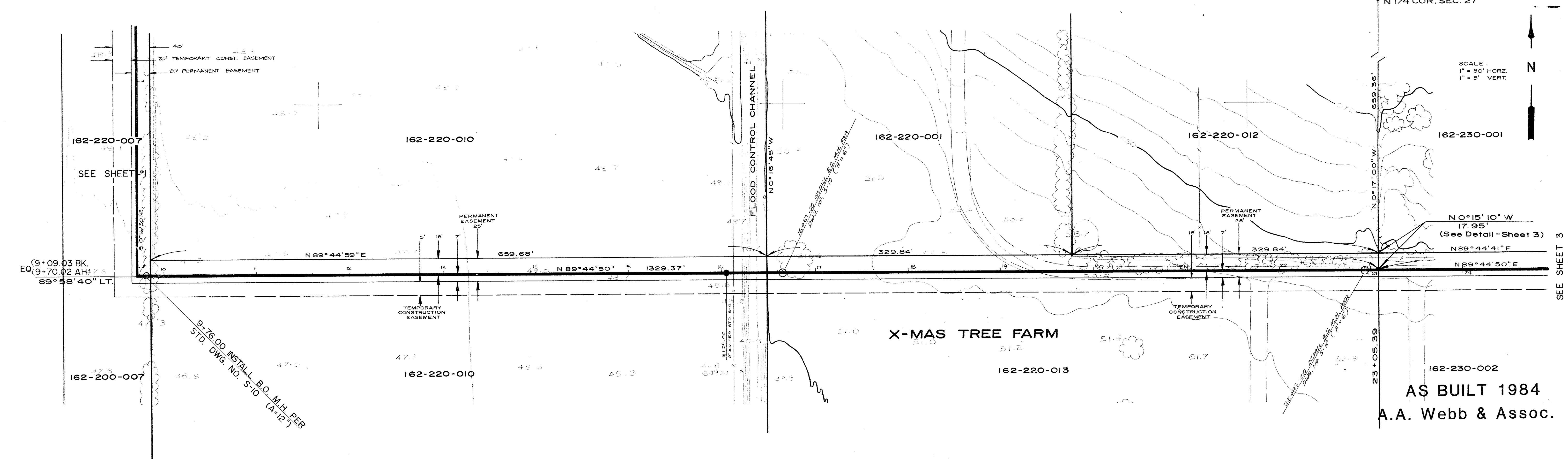
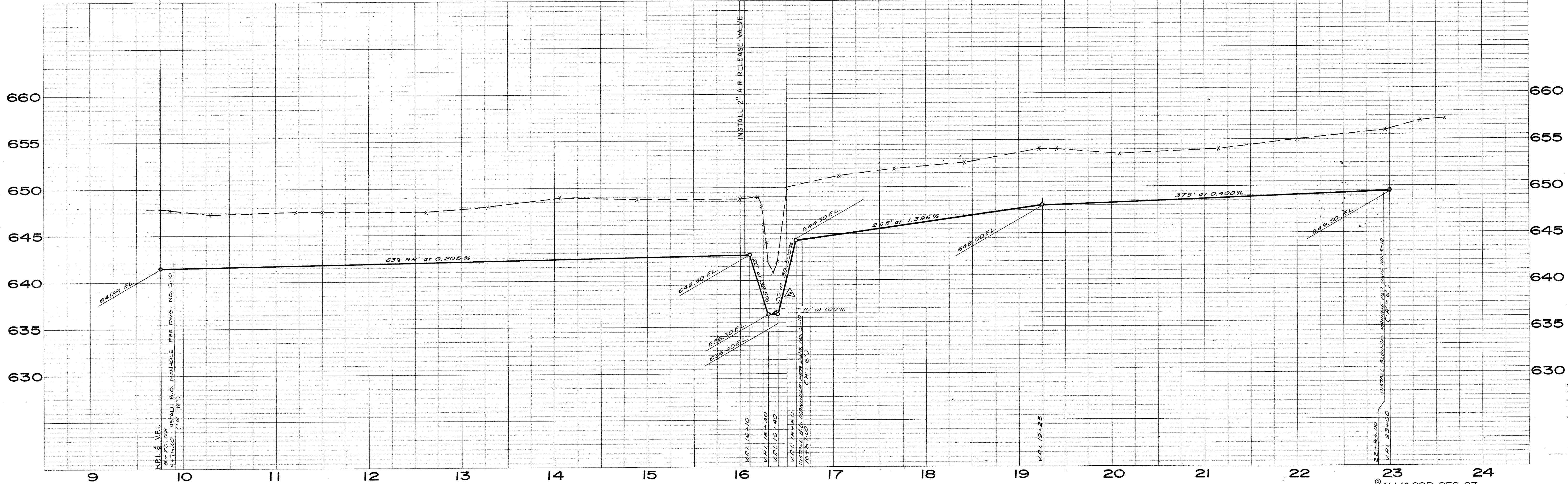
SEE SHEET 2

AS BUILT 1984  
A.A. Webb & Assoc.

FB. 1042 - 11-25  
B.M. = 658.123 Chiseled "X" on NW Corner of Conc. Vault 100' NE'ly from J.C.S.D. Driveway

W.O. 76-128		DATE	ALBERT A. WEBB ASSOCIATES		JURUPA COMMUNITY SERVICES DISTRICT	
DESIGNED F.H.H. - D.R.B.		5/77	CIVIL ENGINEERS		RIVERSIDE COUNTY, CALIFORNIA	
DRAWN D.R.B. - D.R.M.		5/77	3788 McCRAY STREET		INTERCEPTOR SEWER MAIN	
CHECKED F.H.H. - J.K.L.		5/77	RIVERSIDE CALIFORNIA		TO CITY OF RIVERSIDE	
APPROVED BY: <i>A.A. Webb</i>			R.C.E. No. 11042		WATER QUALITY CONTROL PLANT	
DATE: 6/27/77					SHEET 1	
APPROVED BY: _____			DISTRICT ENGINEER		DATE _____	
NO. DATE INITIAL DESCRIPTION APP'VD.		REVISIONS				
Δ	4/10/78	DR.B.	RELOCATE SEWER LINE - CHOD TO 9+00.03	R.L.B.		





AS BUILT 1984  
A.A. Webb & Assoc.

FB 1042 - 11/25  
B.M. = 649.238 Top 1"x2" Hub in Center of Aerial Control Target #4A

NO.	DATE	INITIAL	DESCRIPTION	APP'VD.
1	3/30/78	DRB	REVISE GRADE 4.00% TO 39.500%	F.H.H.
2	4/10/78	DRB	RELOCATE H.P.I. STA. 9+70.02	R.L.B.

W.O. 76-128  
DESIGNED F.H.H.-D.R.B. 5/77  
DRAWN D.R.B.-D.R.M. 5/77  
CHECKED F.H.H.-J.K.L. 5/77

APPROVED BY: *[Signature]*  
DATE: 6/27/77

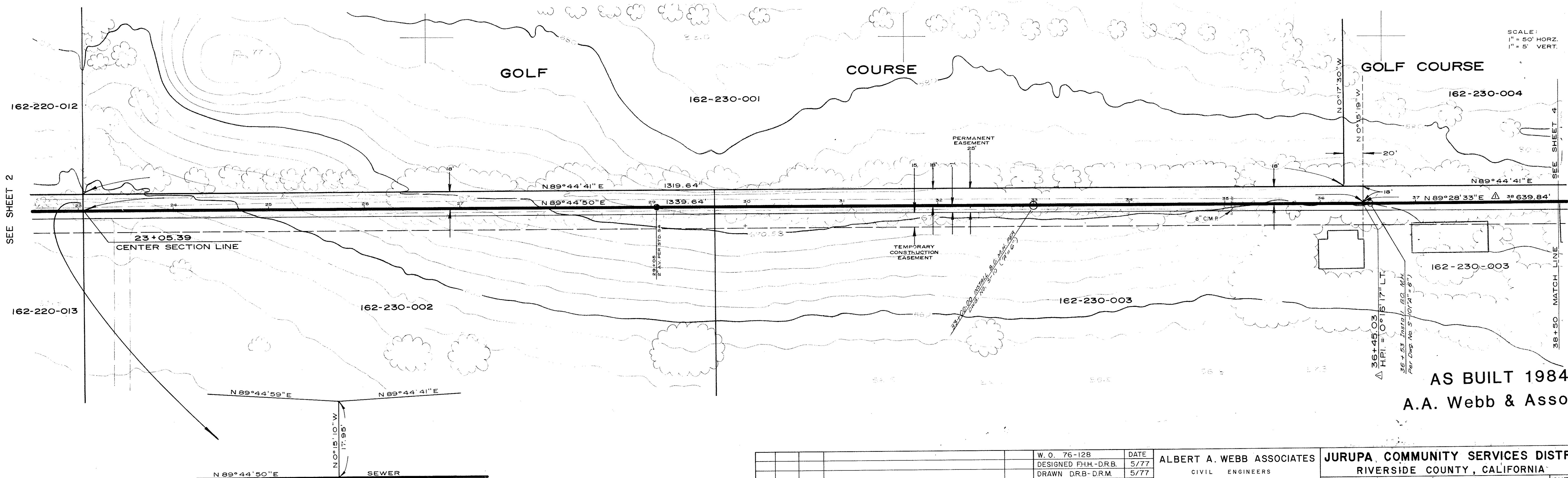
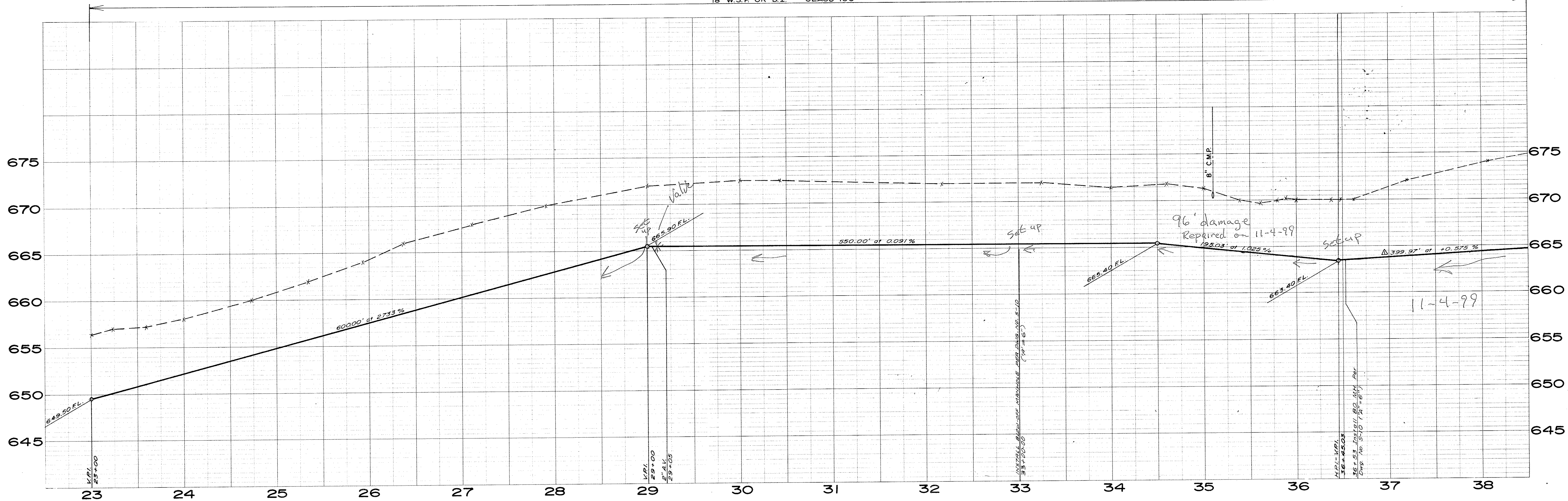
ALBERT A. WEBB ASSOCIATES  
CIVIL ENGINEERS  
3788 McCRAE STREET  
RIVERSIDE CALIFORNIA

JURUPA COMMUNITY SERVICES DISTRICT  
RIVERSIDE COUNTY, CALIFORNIA  
INTERCEPTOR SEWER MAIN  
TO CITY OF RIVERSIDE  
WATER QUALITY CONTROL PLANT

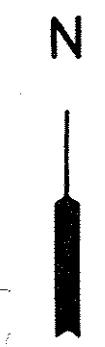
DISTRICT ENGINEER \_\_\_\_\_ DATE \_\_\_\_\_

SHEET **2**  
OF 14 SHEETS  
DWG. NO. 76-128





SCALE:  
1" = 50' HORZ.  
1" = 5' VERT.

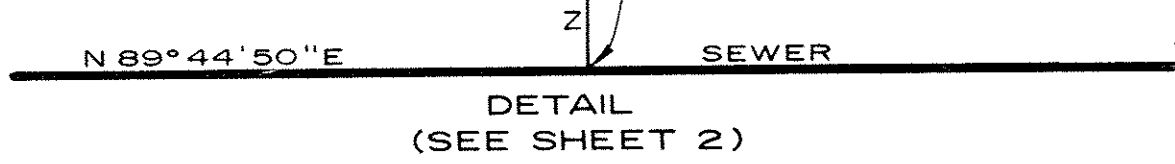


SEE SHEET 2

SEE SHEET 2

SEE SHEET 4

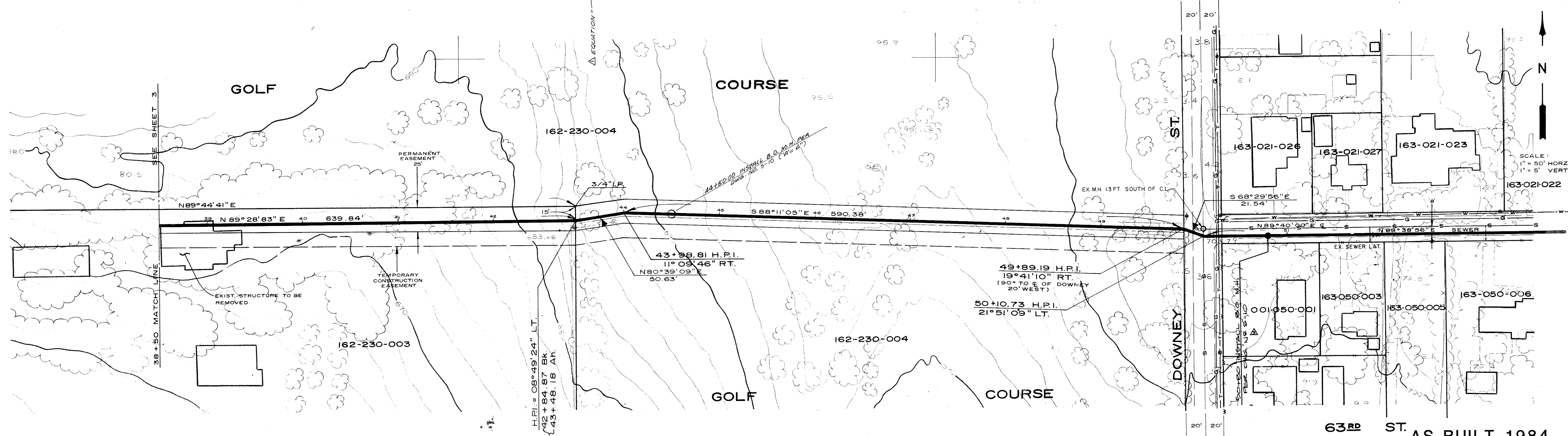
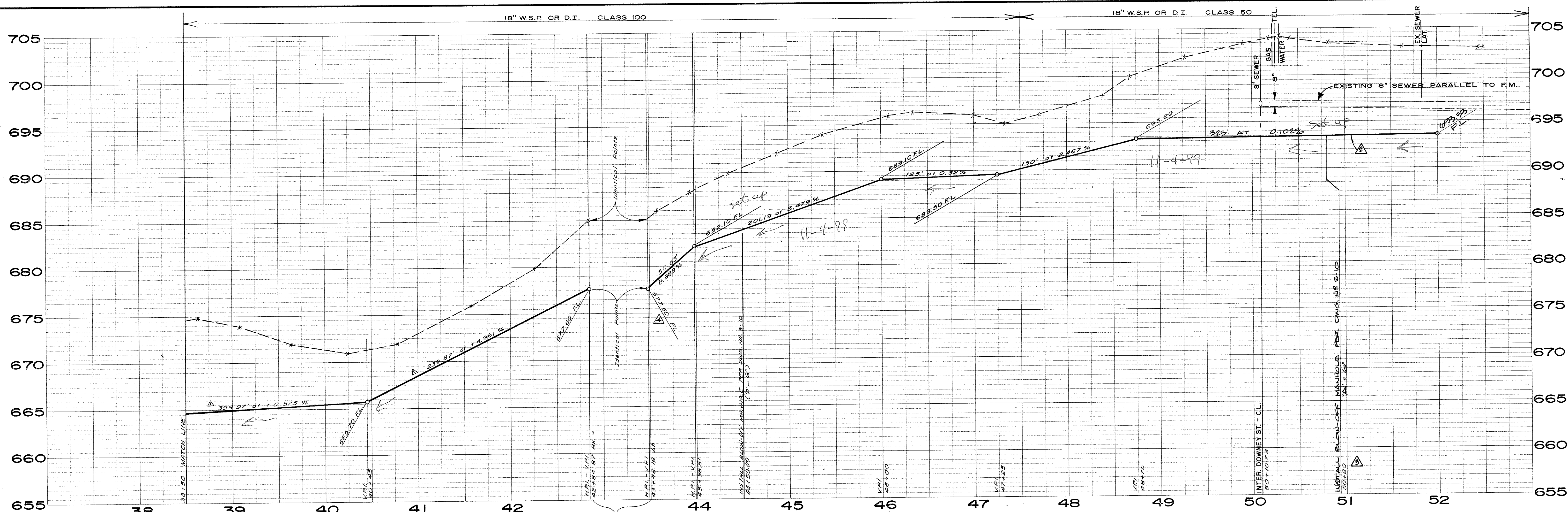
38+50 MATCH LINE



FB. 1042-11/25  
B.M. = 670.587 Top 1"x2" Hub in Center of Aerial Control Target #6A

W. O. 76-128 DESIGNED F.H.H.-D.R.B. DRAWN D.R.B.-D.R.M. CHECKED F.H.H.-J.K.L.		DATE 5/77 5/77 5/77	ALBERT A. WEBB ASSOCIATES CIVIL ENGINEERS 3788 McCRAY STREET RIVERSIDE CALIFORNIA		JURUPA COMMUNITY SERVICES DISTRICT RIVERSIDE COUNTY, CALIFORNIA	
APPROVED BY: <i>[Signature]</i> DATE: 6/27/77			APPROVED BY: <i>[Signature]</i> R.C.C. No. 11842		INTERCEPTOR SEWER MAIN TO CITY OF RIVERSIDE WATER QUALITY CONTROL PLANT	
REVISIONS			APPROVED BY: _____ DISTRICT ENGINEER		DATE _____ DATE	
NO. DATE INITIAL DESCRIPTION APP'VD.			DATE		SHEET 3 OF 14 SHEETS DWG. NO. 76-128	





**-CAUTION-**  
**PACIFIC TELEPHONE**  
**CABLES UNDERGROUND**  
**BEFORE EXCAVATING**  
**CALL COLLECT**

After Hours  
 7:30 A.M. to 5 P.M. & Holidays

Orange County 714-633-0811 714-547-6606  
 Riverside County 714-684-0071 714-547-6606  
 Inyo County 714-684-0071 714-547-6606  
 San Bernardino County 714-684-0071 714-547-6606  
 Los Angeles County 213-621-3111  
 Ventura County 213-621-3111  
 San Diego County 714-298-0595 714-232-0027

**24 HOUR SERVICE**

**FOR FREE CABLE LOCATING SERVICE**

FB 1042 - 11/25

B.M. = 683.667 Top of 1 x 2 - Aerial Control Target #9A

B.M. = 704.623 R.R. Spike in PP 442712E at N.E. Corner of Downey and 63rd St.

NO.	DATE	INITIAL	DESCRIPTION	APP'VD.
1	5/30/76	DR.B	CHG FL 66760 TO 67760	F.H.H.
2	5/7/76	DR.B	DOUB CHANGE DV TO B.O.	F.H.H.
3	5/7/76	DR.B	LOWER GRADE ADJUST TO 52+00	F.H.H.
4	1/73	DR.B	Change Alignment 38+50 to 42+84.87 Bk. = EQ	F.H.H.

W.O. 76-128  
 DESIGNED F.H.H. - DR.B 5/77  
 DRAWN DR.B. - DR.M. 5/77  
 CHECKED F.H.H. - J.K.L. 5/77

ALBERT A. WEBB ASSOCIATES  
 CIVIL ENGINEERS  
 3788 MCGRAY STREET  
 RIVERSIDE CALIFORNIA

APPROVED BY: *[Signature]*  
 DATE: 6/27/77  
 R.C.E. No. 11842

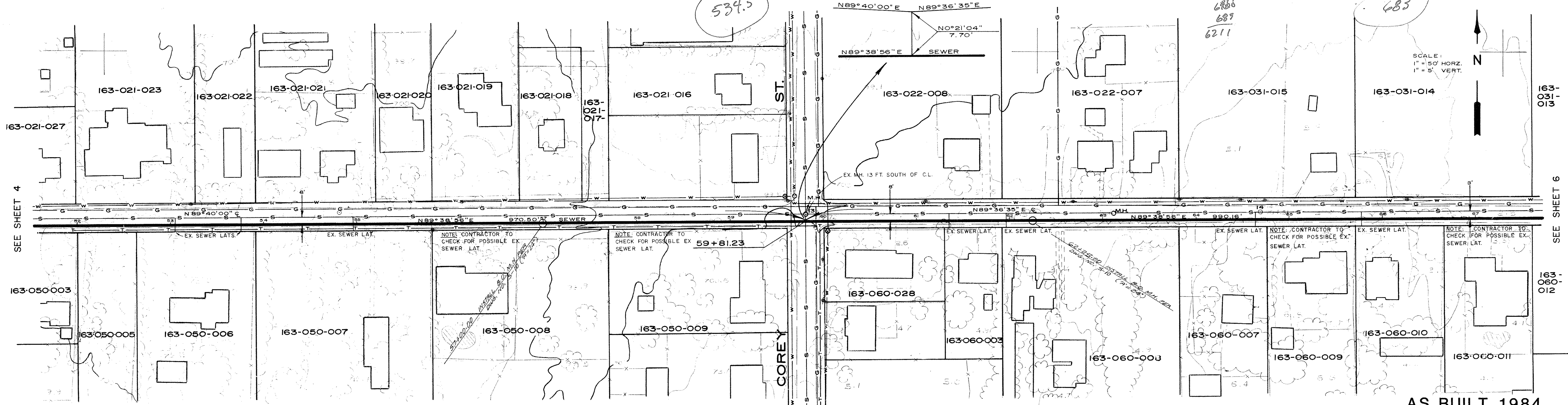
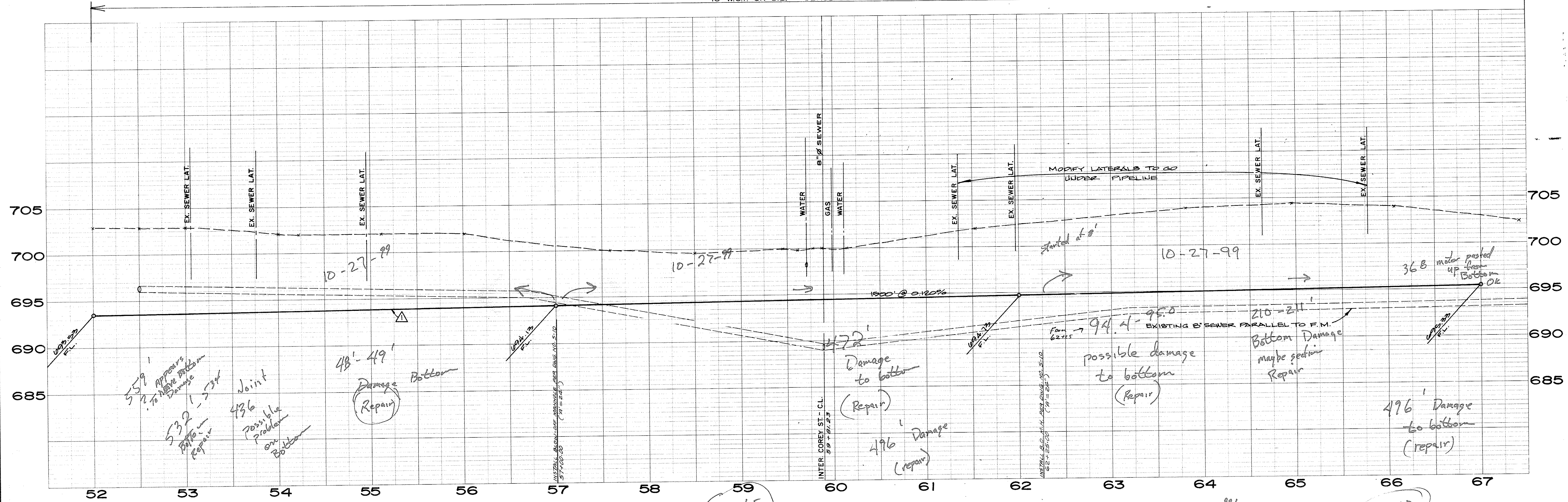
JURUPA COMMUNITY SERVICES DISTRICT  
 RIVERSIDE COUNTY, CALIFORNIA

INTERCEPTOR SEWER MAIN  
 TO CITY OF RIVERSIDE  
 WATER QUALITY CONTROL PLANT

APPROVED BY: \_\_\_\_\_  
 DISTRICT ENGINEER DATE

SHEET **4**  
 OF 14 SHEETS  
 DWG. NO. 76-128





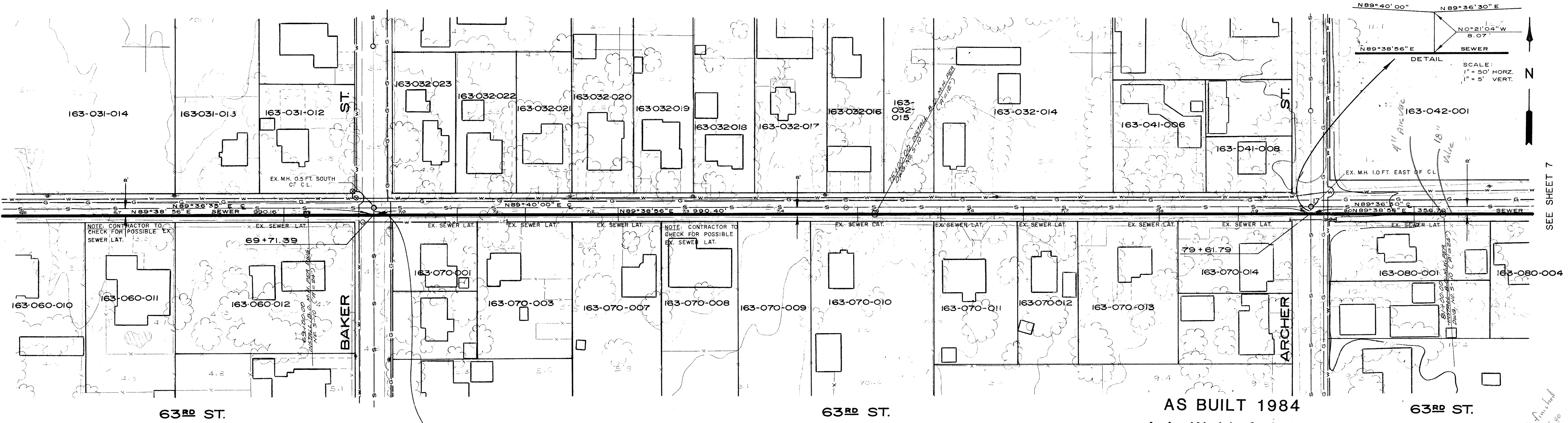
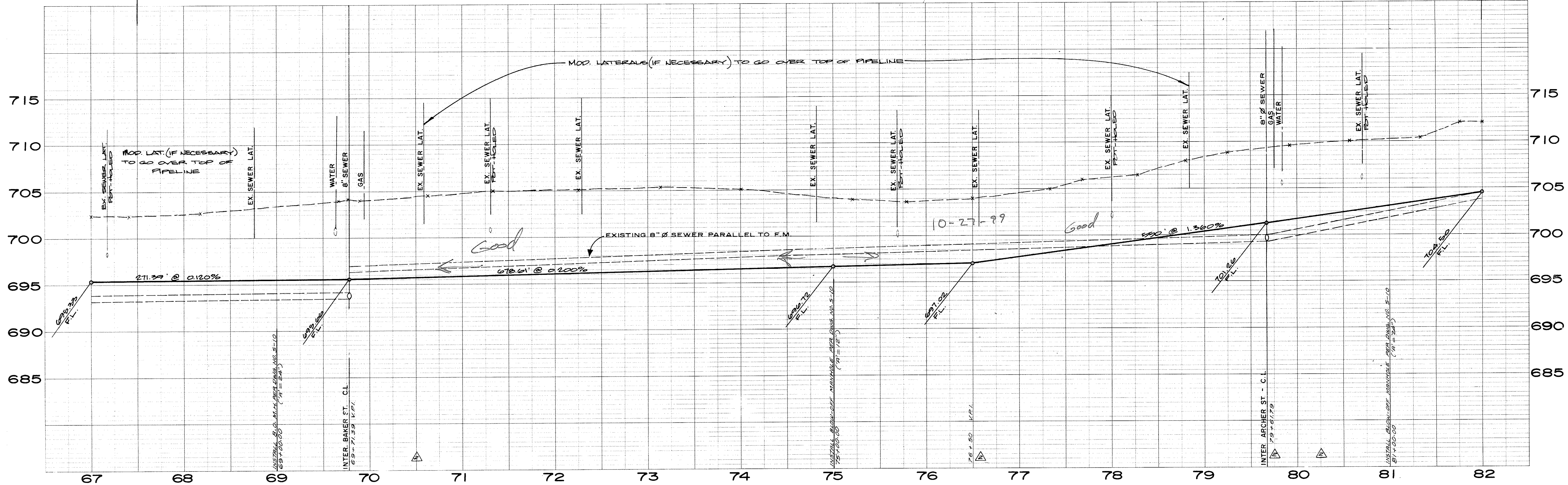
AS BUILT 1984  
A.A. Webb & Assoc.

**CAUTION - PACIFIC TELEPHONE CABLES UNDERGROUND BEFORE EXCAVATING**  
CALL COLLECT:  
7:30 A.M. to 5 P.M. & Holidays  
After Hours  
Orange County 714-633-0811 714-547-6606  
Riverside County 714-684-0071 714-547-6606  
Inyo County 714-684-0071 714-547-6606  
San Bernardino County 714-684-0071 714-547-6606  
Los Angeles County 213-621-3111  
Ventura County 213-621-3111  
San Diego County 714-298-0595 714-232-0027  
FOR FREE CABLE LOCATING SERVICE

FB 1042 - 11/25  
B.M. = 699.723 P.K. Nail & Tin - CL Corey and 63rd St.

W.O. 76-128 DESIGNED F.H.H.-D.R.B. DRAWN D.R.B.-D.R.M. CHECKED F.H.H.-J.K.L.		DATE 5/77 5/77 5/77	ALBERT A. WEBB ASSOCIATES CIVIL ENGINEERS 3788 McGRAY STREET RIVERSIDE CALIFORNIA	JURUPA COMMUNITY SERVICES DISTRICT RIVERSIDE COUNTY, CALIFORNIA INTERCEPTOR SEWER MAIN TO CITY OF RIVERSIDE WATER QUALITY CONTROL PLANT	SHEET <b>5</b> OF 14 SHEETS DWG NO. 76-128																
APPROVED BY: <i>[Signature]</i> DATE: 6/27/77			APPROVED BY: _____ DISTRICT ENGINEER DATE																		
<table border="1"> <thead> <tr> <th>NO.</th> <th>DATE</th> <th>INITIAL</th> <th>DESCRIPTION</th> <th>APP'VD.</th> </tr> </thead> <tbody> <tr> <td>1</td> <td></td> <td></td> <td>378 CHG CHANGE GRADE 62100 TO 61100</td> <td>F.H.H.</td> </tr> <tr> <td colspan="6" style="text-align: center;">REVISIONS</td> </tr> </tbody> </table>						NO.	DATE	INITIAL	DESCRIPTION	APP'VD.	1			378 CHG CHANGE GRADE 62100 TO 61100	F.H.H.	REVISIONS					
NO.	DATE	INITIAL	DESCRIPTION	APP'VD.																	
1			378 CHG CHANGE GRADE 62100 TO 61100	F.H.H.																	
REVISIONS																					





SEE SHEET 5

SEE SHEET 7

AS BUILT 1984  
A.A. Webb & Assoc.

DETAIL  
FB 1042-11/25  
B.M. = 705.755 R.R. Spike in PP 104690H  
S.E. Corner Baker St. and  
63rd St.

NO.	DATE	INITIAL	DESCRIPTION	APP'VD.
1	5/77	F.H.H.	DESIGNED F.H.H. - DR.B.	
2	5/77	F.H.H.	DRAWN DR.B. - DR.M.	
3	5/77	J.K.L.	CHECKED F.H.H. - J.K.L.	
4	5/77	F.H.H.	REVISED GRADES	
5	5/77	F.H.H.	CRD. RAISE GRADE 61+00 TO 62+00	

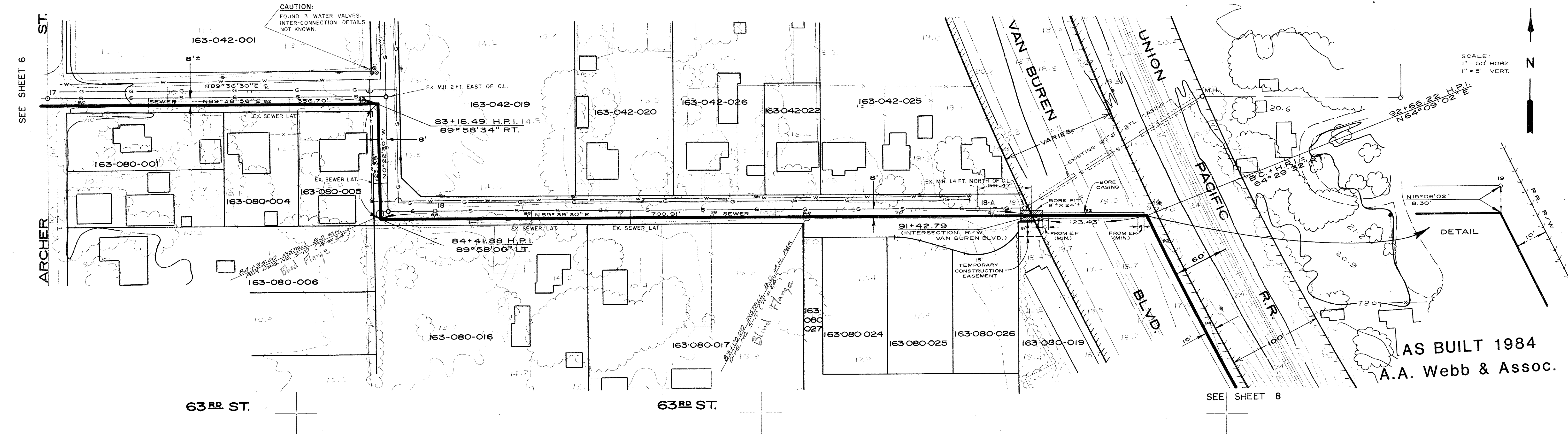
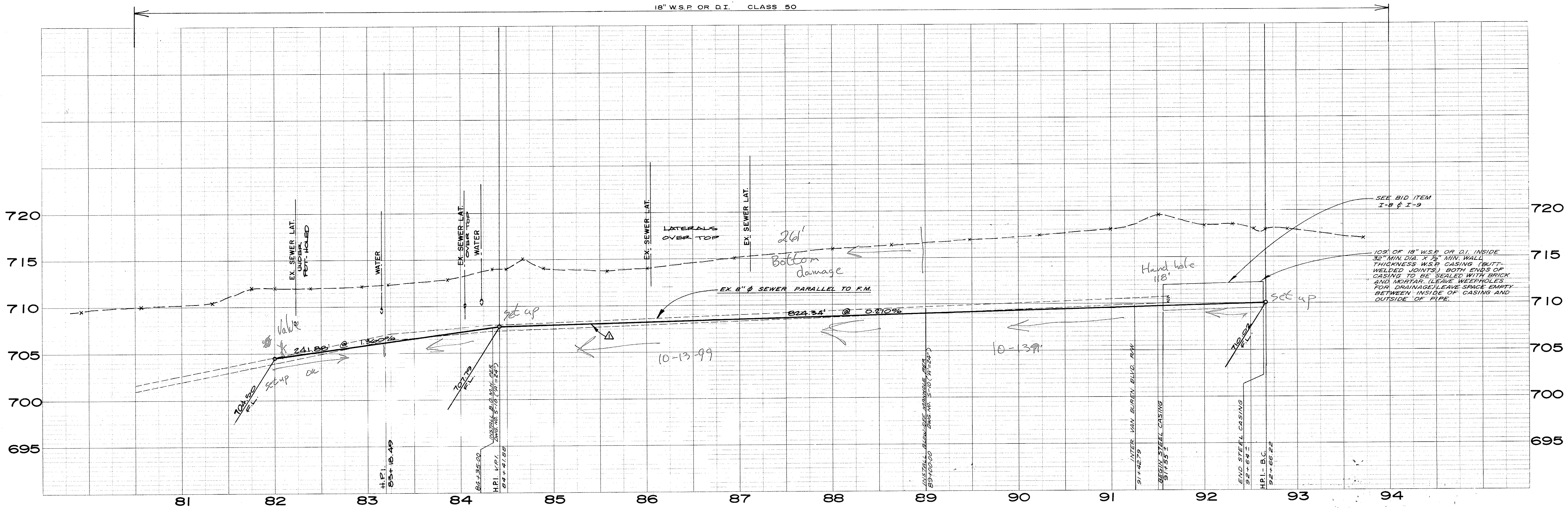
W.O. 76-128  
DESIGNED F.H.H. - DR.B. 5/77  
DRAWN DR.B. - DR.M. 5/77  
CHECKED F.H.H. - J.K.L. 5/77

ALBERT A. WEBB ASSOCIATES  
CIVIL ENGINEERS  
3788 McCRA Y STREET  
RIVERSIDE CALIFORNIA  
APPROVED BY: *[Signature]*  
DATE: 6/27/77  
R.C.E. No. 11842

JURUPA COMMUNITY SERVICES DISTRICT  
RIVERSIDE COUNTY, CALIFORNIA  
INTERCEPTOR SEWER MAIN  
TO CITY OF RIVERSIDE  
WATER QUALITY CONTROL PLANT  
APPROVED BY: \_\_\_\_\_  
DISTRICT ENGINEER DATE

SHEET **6**  
OF 14 SHEETS  
DWG NO. 76-128





63<sup>RD</sup> ST.

63<sup>RD</sup> ST.

SEE SHEET 8

FB. 1042 - 11/25  
 B.M. = 717.788 Top 1" I.P. - Center of Cul-de-sac Control Point 18-A.  
 B.M. = 704.623 R.R. Spike in PP 442712R at N.E. Corner of Downey and 63rd St.

NO.	DATE	INITIAL	DESCRIPTION	APP'VD.
1	1/78	DRB	RAISE GRADE @ 100 TO 92+66.22	F.H.H.
REVISIONS				

W.O. 76-128	DATE
DESIGNED F.H.H. - D.R.B.	5/77
DRAWN D.R.B. - D.R.M.	5/77
CHECKED F.H.H. - J.K.L.	5/77

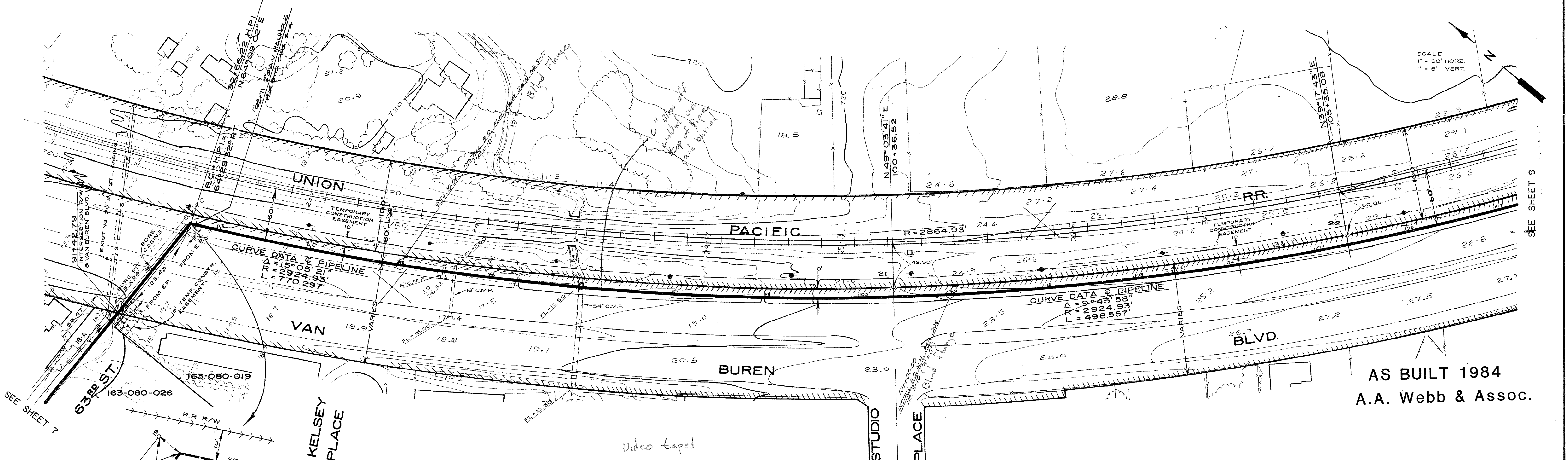
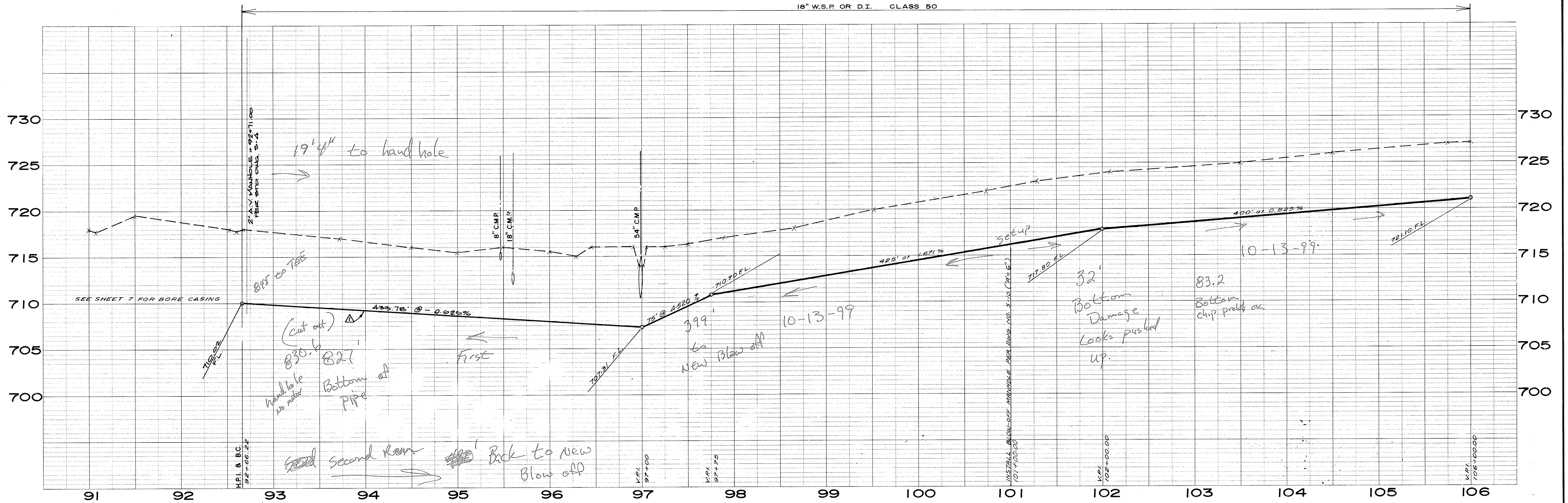
ALBERT A. WEBB ASSOCIATES  
 CIVIL ENGINEERS  
 3788 McGRAY STREET  
 RIVERSIDE CALIFORNIA  
 APPROVED BY: *[Signature]*  
 DATE: 6/27/77  
 R. C. E. No. 11842

JURUPA COMMUNITY SERVICES DISTRICT  
 RIVERSIDE COUNTY, CALIFORNIA  
 INTERCEPTOR SEWER MAIN  
 TO CITY OF RIVERSIDE  
 WATER QUALITY CONTROL PLANT  
 APPROVED BY: \_\_\_\_\_ DATE \_\_\_\_\_  
 DISTRICT ENGINEER

SHEET **7**  
 OF 14 SHEETS  
 DWG. NO. 76-128

AS BUILT 1984  
 A.A. Webb & Assoc.





AS BUILT 1984  
A.A. Webb & Assoc.

FB. 1042 - 11/25

B.M. = 717.788 Top 1" I.P. - Center of Cul-de-sac Control Point 18-A.  
B.M. = 720.799 P.I. & Tag on Top Conc. Culvert Headwall 100' S.E. of Control Pt. #20.

NO.	DATE	INITIAL	DESCRIPTION	APP'VD.

W.O. 76-128  
DESIGNED F.H. - D.R.B. 5/77  
DRAWN D.R.B. - D.R.M. 5/77  
CHECKED F.H. - J.K.L. 5/77

ALBERT A. WEBB ASSOCIATES  
CIVIL ENGINEERS  
3788 Mc GRAY STREET  
RIVERSIDE CALIFORNIA

JURUPA COMMUNITY SERVICES DISTRICT  
RIVERSIDE COUNTY, CALIFORNIA  
INTERCEPTOR SEWER MAIN  
TO CITY OF RIVERSIDE  
WATER QUALITY CONTROL PLANT

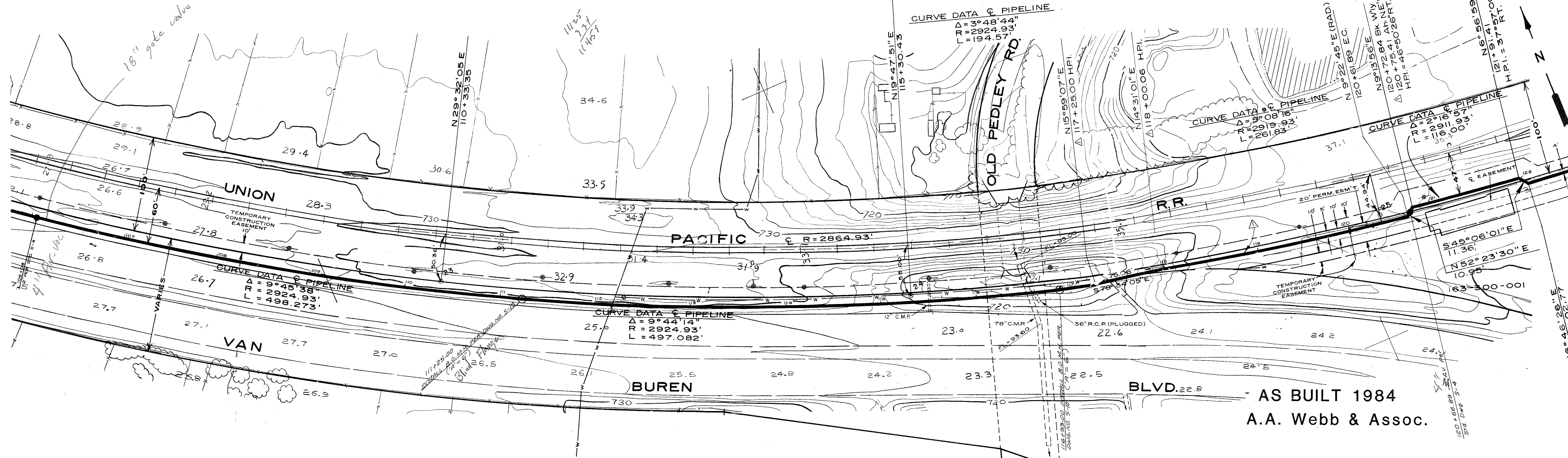
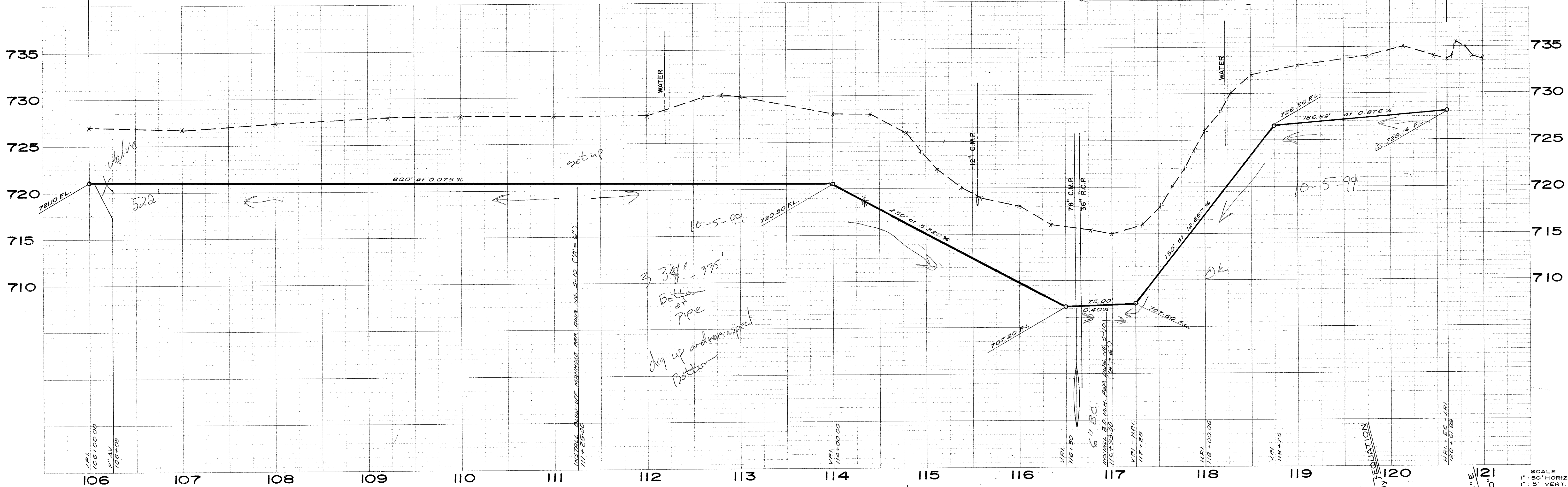
APPROVED BY: *[Signature]*  
DATE: 5/27/77  
R.C.E. No. 11842

DISTRICT ENGINEER DATE

SHEET 8 OF 14 SHEETS  
DWG. NO. 76-128







FB 1042 - 11/25

B.M. = 720.799 P.K. & Tag on Top Conc. Culvert Headwall 100' S.E. of Control Pt. #24.

NO.	DATE	INITIAL	DESCRIPTION	APP'VD.
1/78	DR.B.		Change Alignment Station 117+25 to 120+72.84	F.H.H.

W.O. 76-128  
 DESIGNED F.H.H. - D.R.B. 5/77  
 DRAWN D.R.B. - D.R.M. 5/77  
 CHECKED F.H.H. - J.K.L. 5/77

ALBERT A. WEBB ASSOCIATES  
 CIVIL ENGINEERS  
 3788 McCRAV STREET  
 RIVERSIDE CALIFORNIA

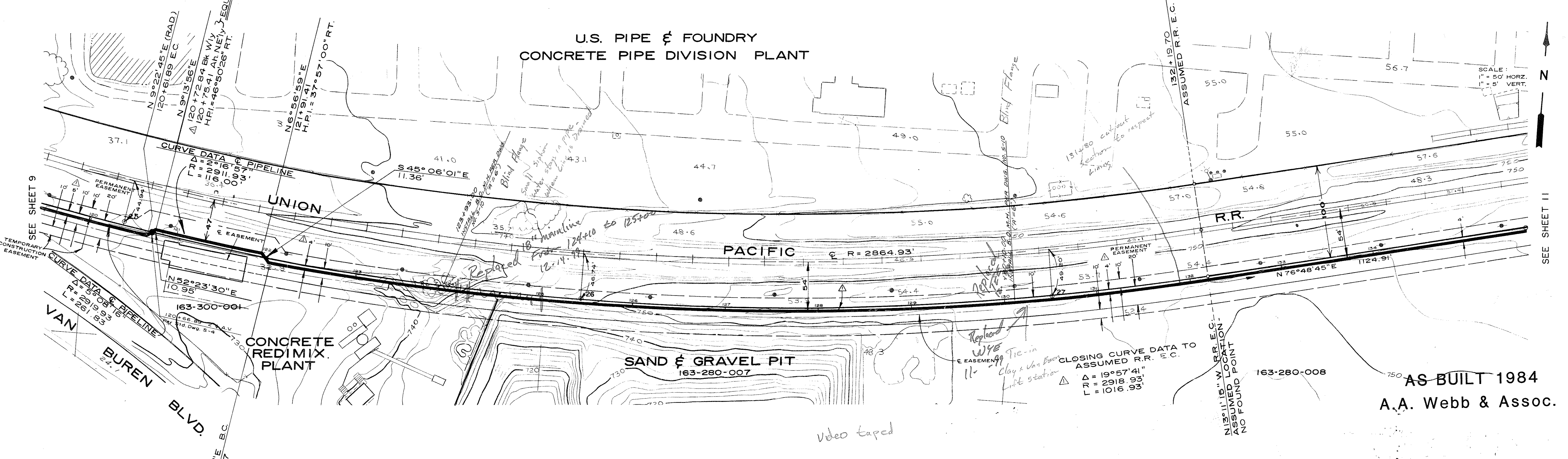
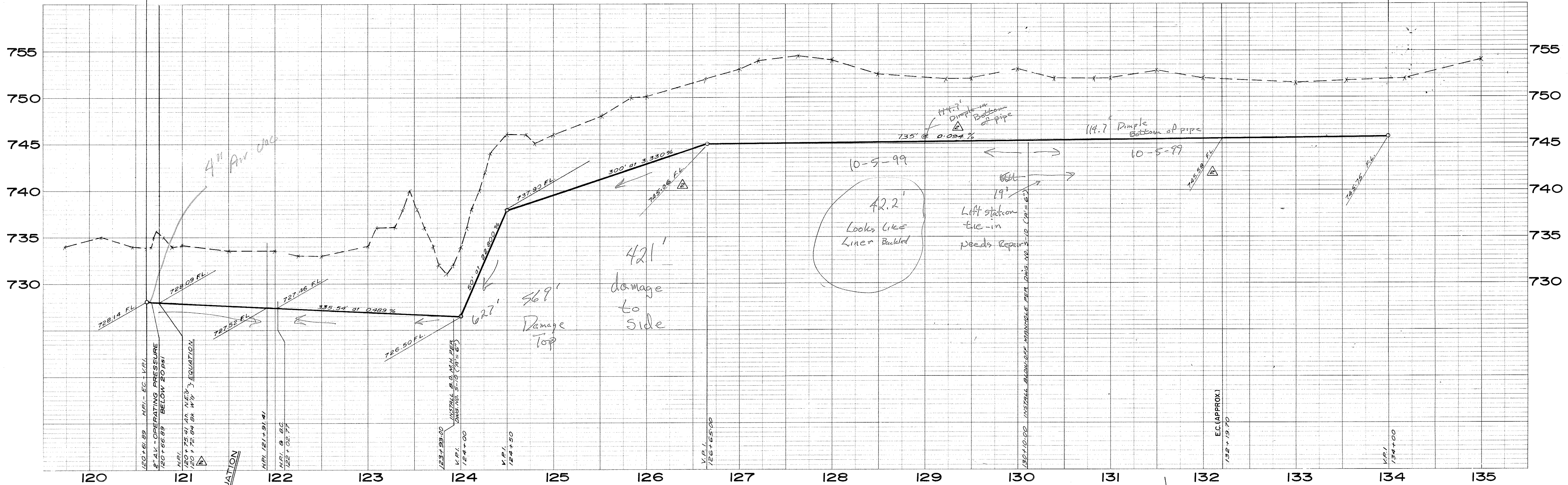
JURUPA COMMUNITY SERVICES DISTRICT  
 RIVERSIDE COUNTY, CALIFORNIA  
 INTERCEPTOR SEWER MAIN  
 TO CITY OF RIVERSIDE  
 WATER QUALITY CONTROL PLANT

APPROVED BY: *[Signature]*  
 DATE: 6/27/77

DISTRICT ENGINEER DATE

SHEET 9 OF 14 SHEETS  
 DWG. NO. 76-128



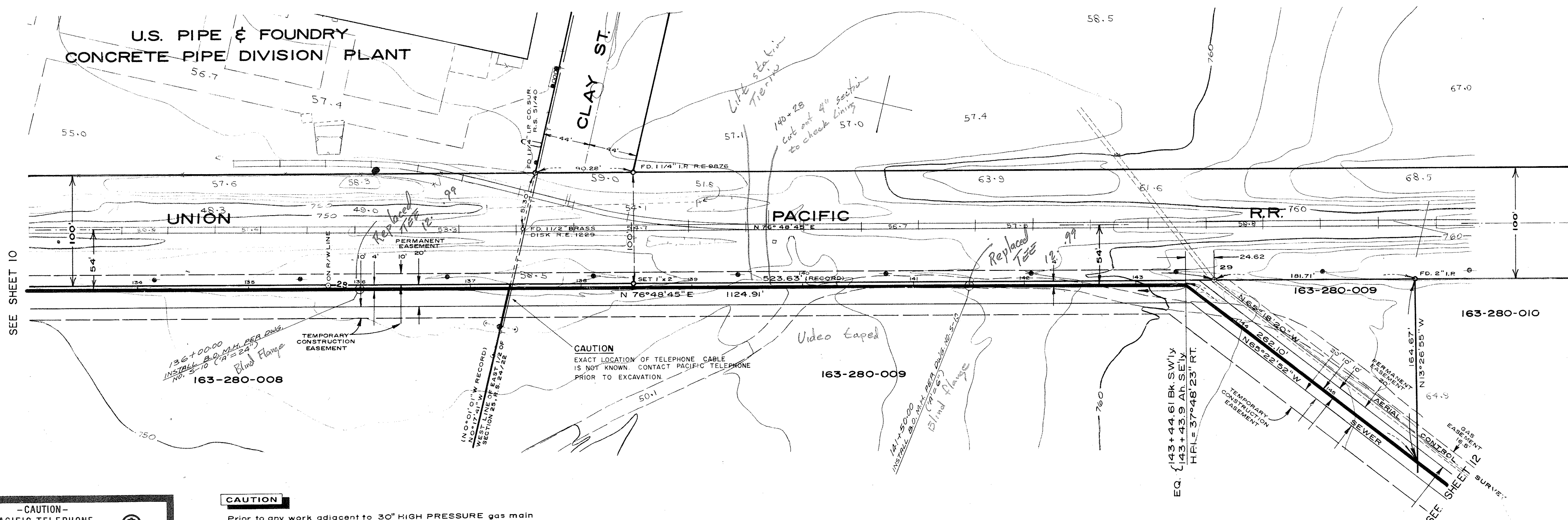
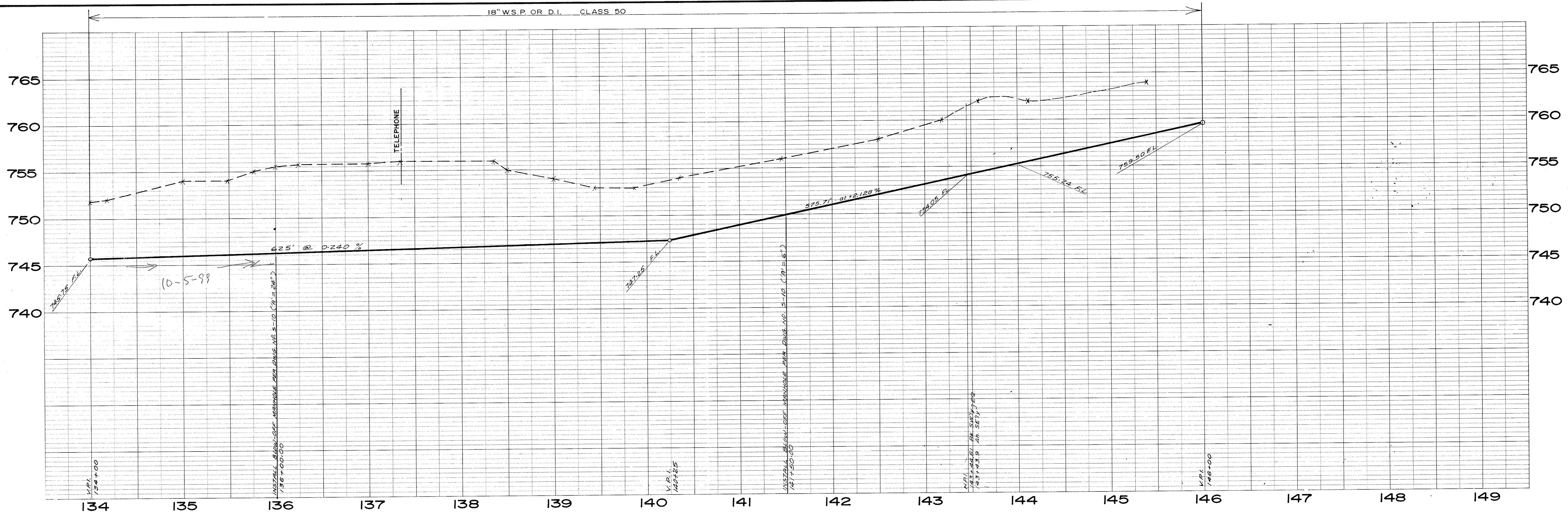


AS-BUILT 1984  
A.A. Webb & Assoc.

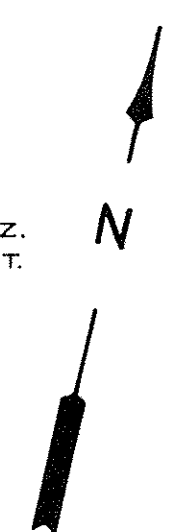
FB. 1042-11/25  
B.M. = 755.193 Spike in Power Pole #1339410E 100' South of R.R. Track & SE Prop. Corner Smith Scott Yard

W.O. 76-128 DESIGNED F.H.H.-D.R.B. 5/77 DRAWN D.R.B.-D.R.M. 5/77 CHECKED F.H.H.-J.K.L. 5/77		DATE 5/77 ALBERT A. WEBB ASSOCIATES CIVIL ENGINEERS 3788 Mc GRAY STREET RIVERSIDE CALIFORNIA		JURUPA COMMUNITY SERVICES DISTRICT RIVERSIDE COUNTY, CALIFORNIA INTERCEPTOR SEWER MAIN TO CITY OF RIVERSIDE WATER QUALITY CONTROL PLANT		SHEET 10 OF 14 SHEETS DWG. NO. 76-128	
APPROVED BY: <i>[Signature]</i> DATE: 6-27-77 SCALE:		APPROVED BY: <i>[Signature]</i> DATE: 6-27-77 SCALE:		APPROVED BY: _____ DATE: _____		APPROVED BY: _____ DATE: _____	
REVISIONS NO. DATE INITIAL DESCRIPTION APP'VD.		5/30/78 D.R.B. REVISE EQUATION, GRADE % & FL. F.H.H. 1/78 D.R.B. Change Alignment 122+02.77 to 134+00 F.H.H.		APPROVED BY: _____ DATE: _____		APPROVED BY: _____ DATE: _____	





SCALE:  
1" = 50' HORZ.  
1" = 5' VERT.



AS BUILT 1984  
A.A. Webb & Assoc.

**- CAUTION -**  
PACIFIC TELEPHONE  
CABLES UNDERGROUND  
BEFORE EXCAVATING  
CALL COLLECT

After Hours  
7:30 A.M. to 5 P.M. & Holidays

Orange County 714-633-0811 714-547-6606  
Riverside County 714-684-0071 714-547-6606  
Inyo County 714-684-0071 714-547-6606  
San Bernardino County 714-684-0071 714-547-6606  
Los Angeles County 213-621-3111 24 HOUR SERVICE  
Ventura County 213-621-3111 24 HOUR SERVICE  
San Diego County 714-298-0595 714-232-0027

FOR FREE CABLE LOCATING SERVICE

**CAUTION**  
Prior to any work adjacent to 30" HIGH PRESSURE gas main contractor shall notify Gas Co. (714) 347-3522

FB. 1042 - 11 / 25  
B.M. = 755.193 Spike in Power Pole #1339410E 100' South of R.R. Track & SE Prop. Corner Smith Scott Yard

NO.	DATE	INITIAL	DESCRIPTION	F.H.H.	APP'VD.
1	1/78	DR.B.	Change Alignment 134+00 to 143+44.61		

W.O. 76-128  
DESIGNED F.H.H.-D.R.B. 5/77  
DRAWN D.R.B.-D.R.M. 5/77  
CHECKED F.H.H.-J.K.L. 5/77

ALBERT A. WEBB ASSOCIATES  
CIVIL ENGINEERS  
3788 McCRA Y STREET  
RIVERSIDE CALIFORNIA

APPROVED BY: *[Signature]*  
DATE: 2-27-77

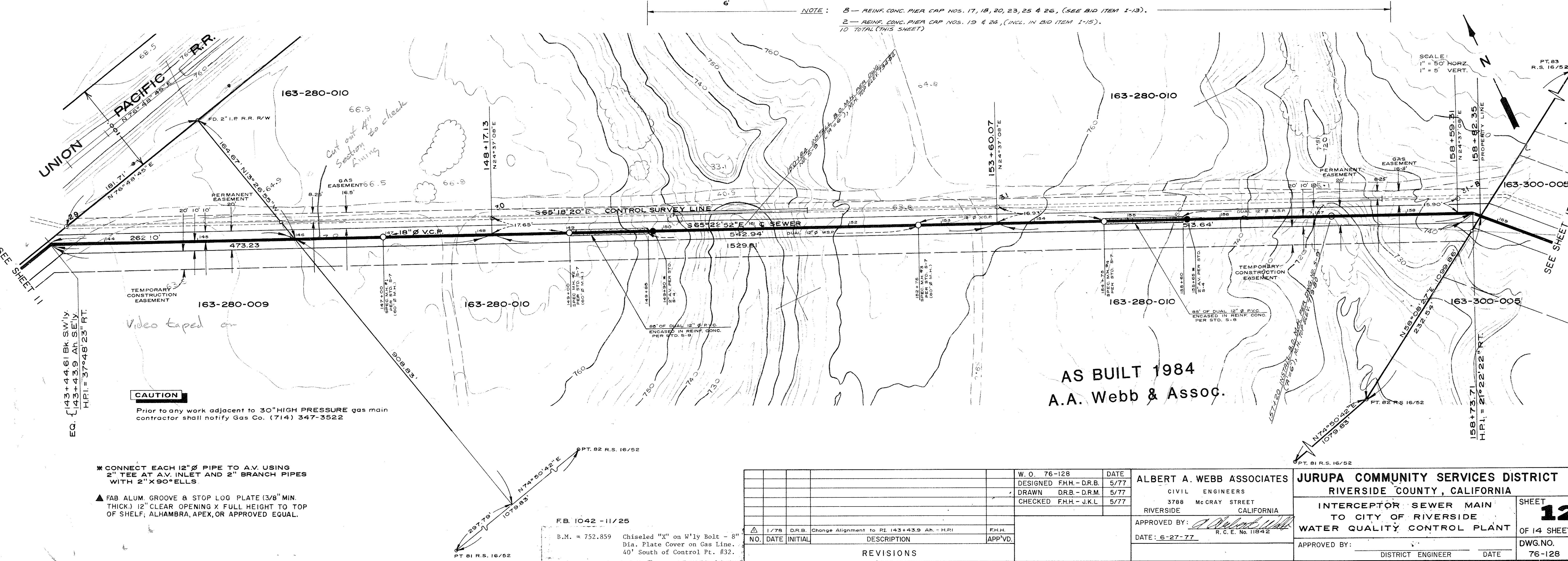
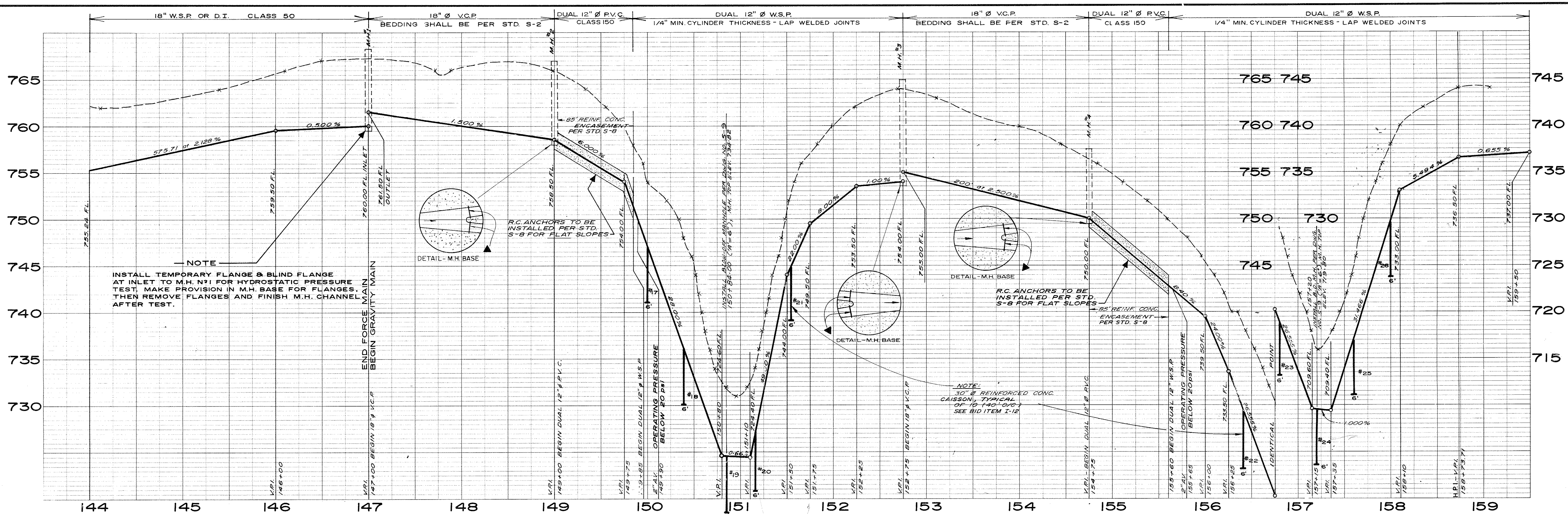
JURUPA COMMUNITY SERVICES DISTRICT  
RIVERSIDE COUNTY, CALIFORNIA

INTERCEPTOR SEWER MAIN  
TO CITY OF RIVERSIDE  
WATER QUALITY CONTROL PLANT

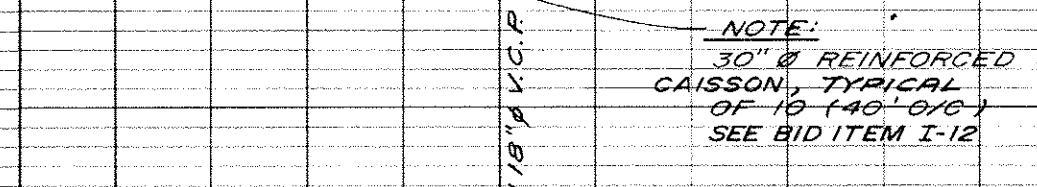
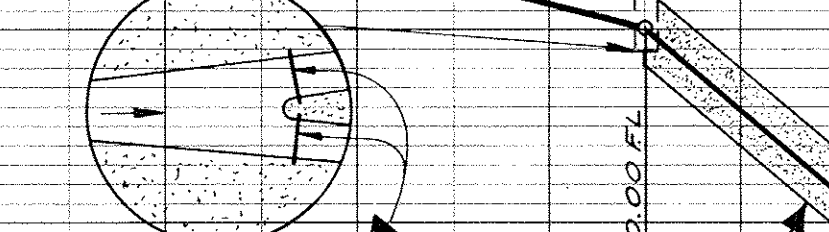
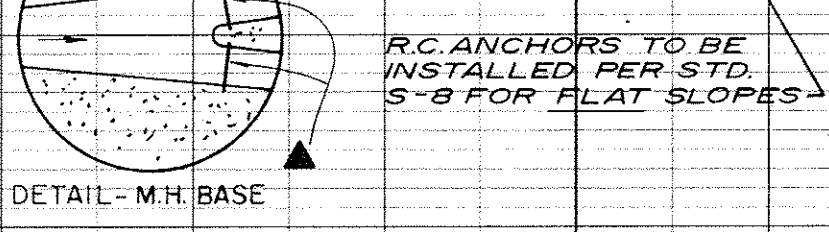
APPROVED BY: \_\_\_\_\_  
DISTRICT ENGINEER DATE

SHEET **11**  
OF 14 SHEETS  
DWG. NO. 76-128





**NOTE**  
 INSTALL TEMPORARY FLANGE & BLIND FLANGE AT INLET TO M.H. #1 FOR HYDROSTATIC PRESSURE TEST. MAKE PROVISION IN M.H. BASE FOR FLANGES. THEN REMOVE FLANGES AND FINISH M.H. CHANNEL AFTER TEST.



**NOTE:**  
 1 - REINFORCED CONC. ENCASEMENT PER STD. S-8  
 2 - REINFORCED CONC. ENCASEMENT PER STD. S-8  
 3 - REINFORCED CONC. ENCASEMENT PER STD. S-8  
 4 - REINFORCED CONC. ENCASEMENT PER STD. S-8  
 5 - REINFORCED CONC. ENCASEMENT PER STD. S-8  
 6 - REINFORCED CONC. ENCASEMENT PER STD. S-8  
 7 - REINFORCED CONC. ENCASEMENT PER STD. S-8  
 8 - REINFORCED CONC. ENCASEMENT PER STD. S-8  
 9 - REINFORCED CONC. ENCASEMENT PER STD. S-8  
 10 - TOTAL (THIS SHEET)

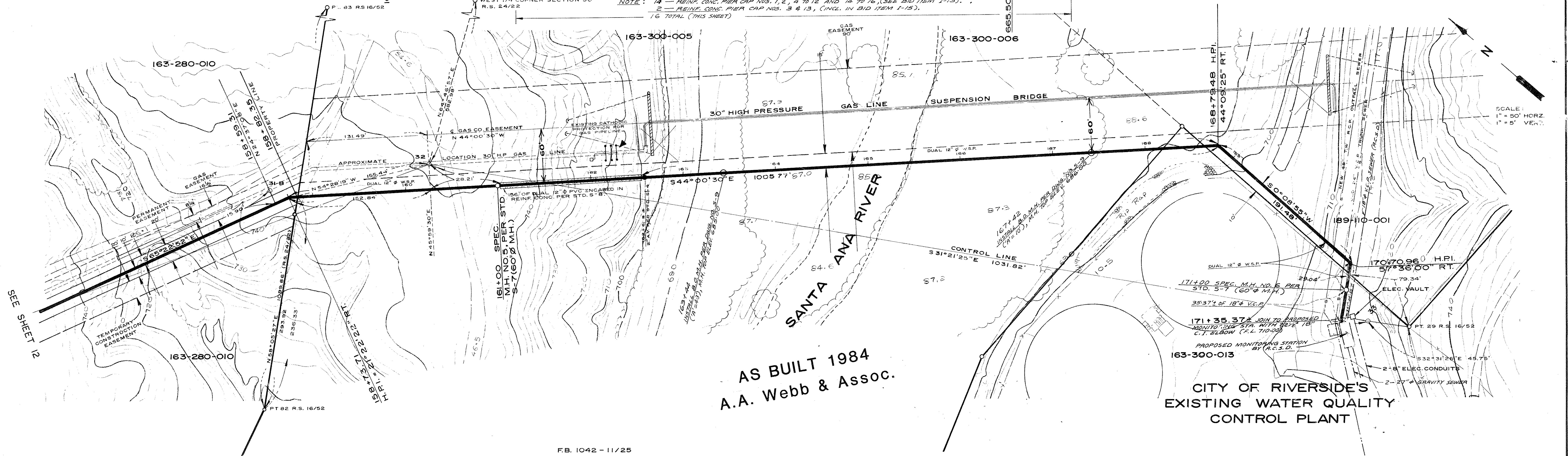
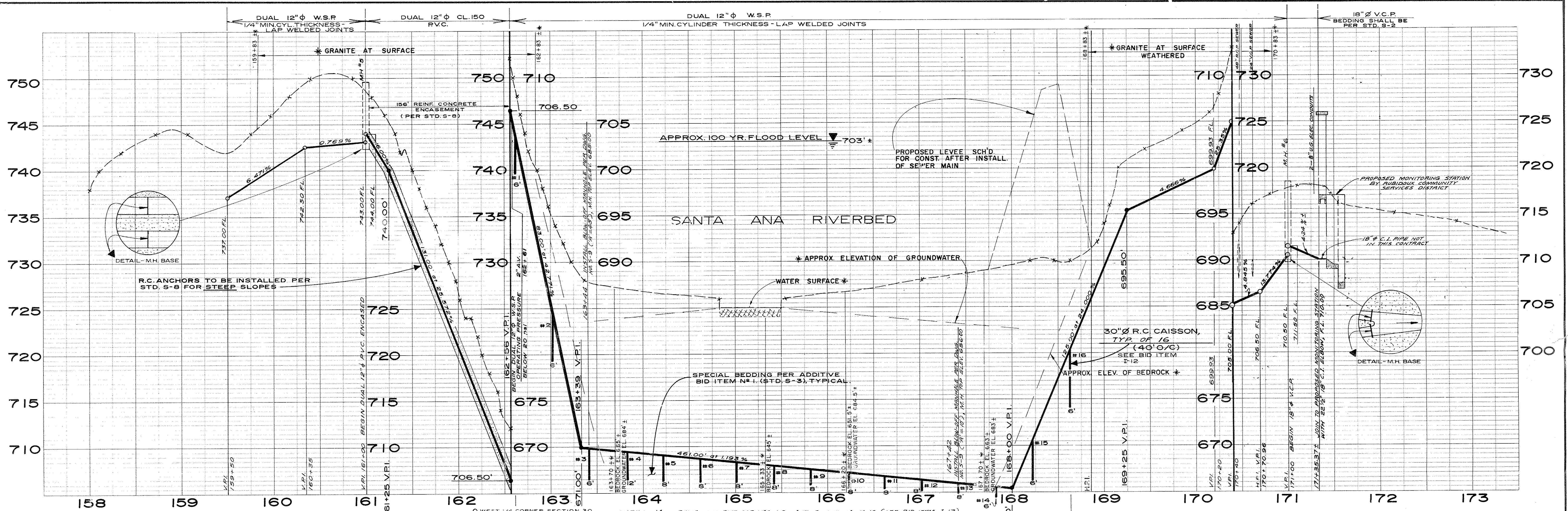
**CAUTION**  
 Prior to any work adjacent to 30" HIGH PRESSURE gas main contractor shall notify Gas Co. (714) 347-3522

\* CONNECT EACH 12" Ø PIPE TO A.V. USING 2" TEE AT A.V. INLET AND 2" BRANCH PIPES WITH 2" X 90° ELLS  
 ▲ FAB ALUM. GROOVE & STOP LOG PLATE (3/8" MIN. THICK) 12" CLEAR OPENING X FULL HEIGHT TO TOP OF SHELF; ALHAMBRA, APEX, OR APPROVED EQUAL.

**AS BUILT 1984**  
**A.A. Webb & Assoc.**

W.O. 76-128 DESIGNED F.H.H.-D.R.B. 5/77 DRAWN D.R.B.-D.R.M. 5/77 CHECKED F.H.H.-J.K.L. 5/77		DATE APPROVED BY: <i>[Signature]</i> DATE: 6-27-77 R.C.E. No. 11842		<b>ALBERT A. WEBB ASSOCIATES</b> CIVIL ENGINEERS 3788 McGRAY STREET RIVERSIDE CALIFORNIA		<b>JURUPA COMMUNITY SERVICES DISTRICT</b> RIVERSIDE COUNTY, CALIFORNIA INTERCEPTOR SEWER MAIN TO CITY OF RIVERSIDE WATER QUALITY CONTROL PLANT		SHEET <b>12</b> OF 14 SHEETS DWG. NO. 76-128
REVISIONS NO. DATE INITIAL DESCRIPTION APP'VD.		APPROVED BY: _____ DATE: _____		APPROVED BY: _____ DATE: _____		APPROVED BY: _____ DATE: _____		DISTRICT ENGINEER DATE





**CAUTION**  
 Prior to any work adjacent to 30" HIGH PRESSURE gas main contractor shall notify Gas Co. (714) 347-3522

\*\* CONNECT EACH 12" Ø PIPE TO AV. USING 2" TEE AT AV. INLET AND 2" BRANCH PIPES WITH 2" X 90° ELLS.

▲ FAB ALUM. GROOVE & STOP LOG PLATE (3/8" MIN. THICK) 12" CLEAR OPENING X FULL HEIGHT TO TOP OF SHELF, ALHAMBRA, APEX, OR APPROVED EQUAL.

FB. 1042 - 11/25

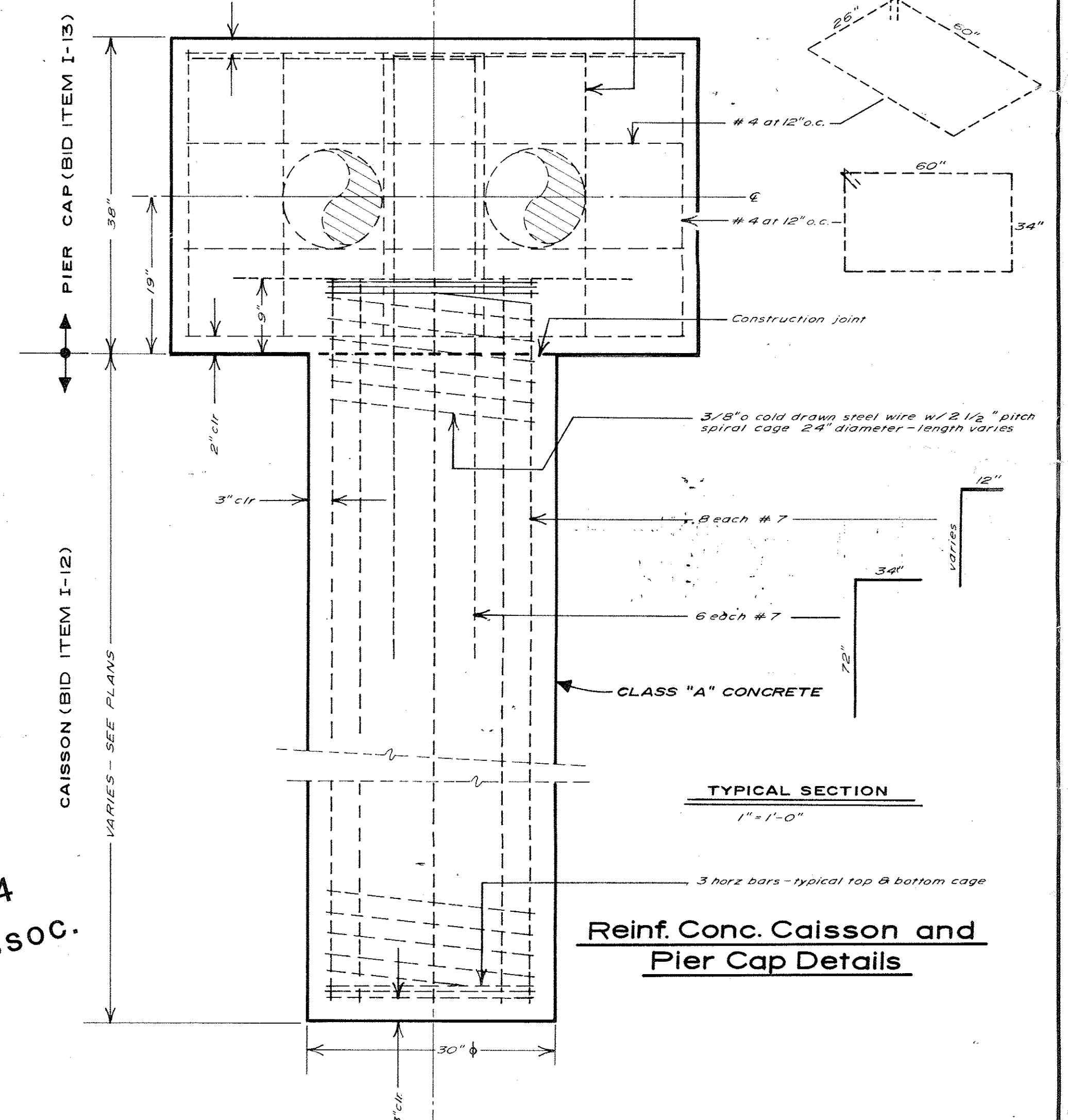
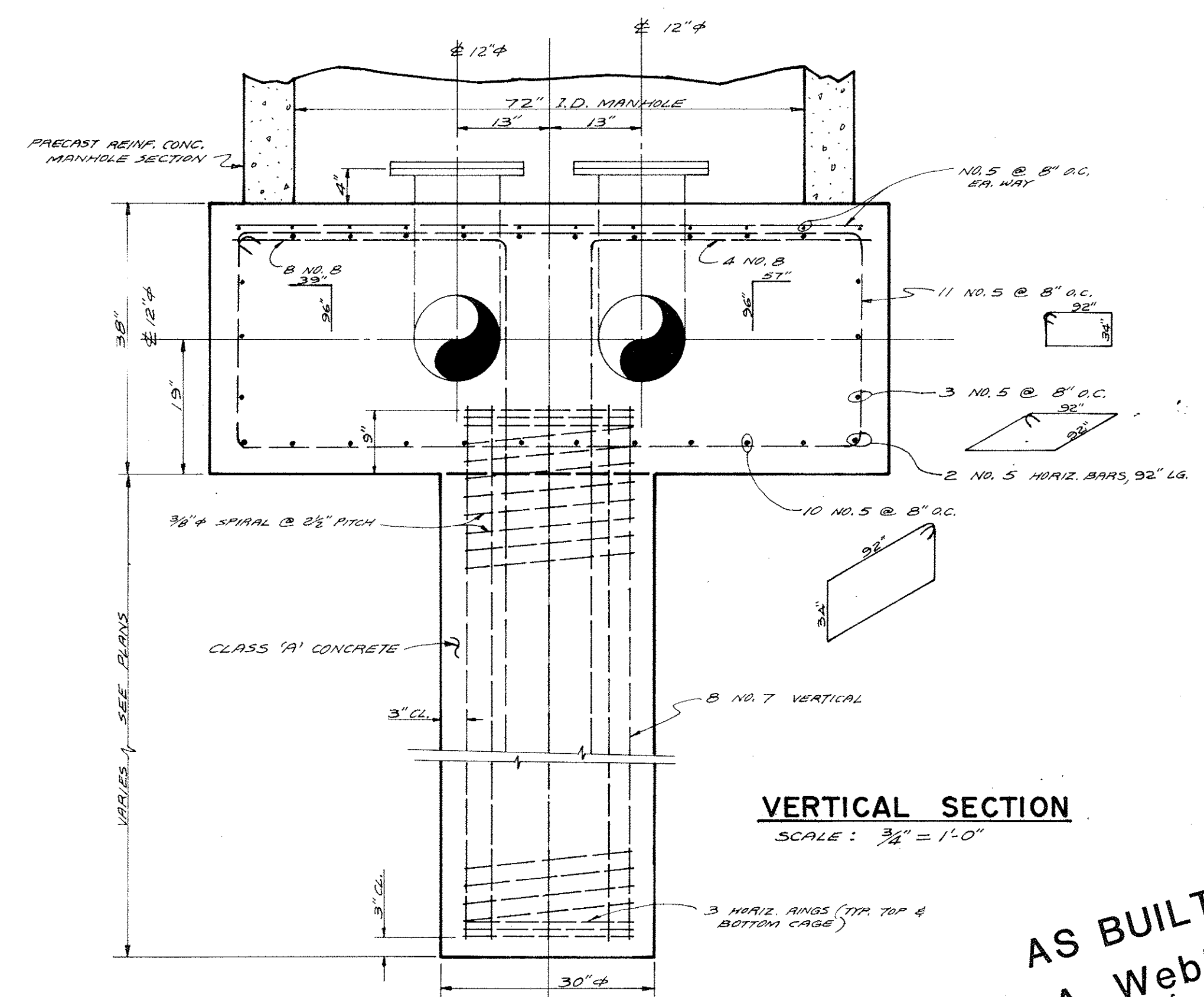
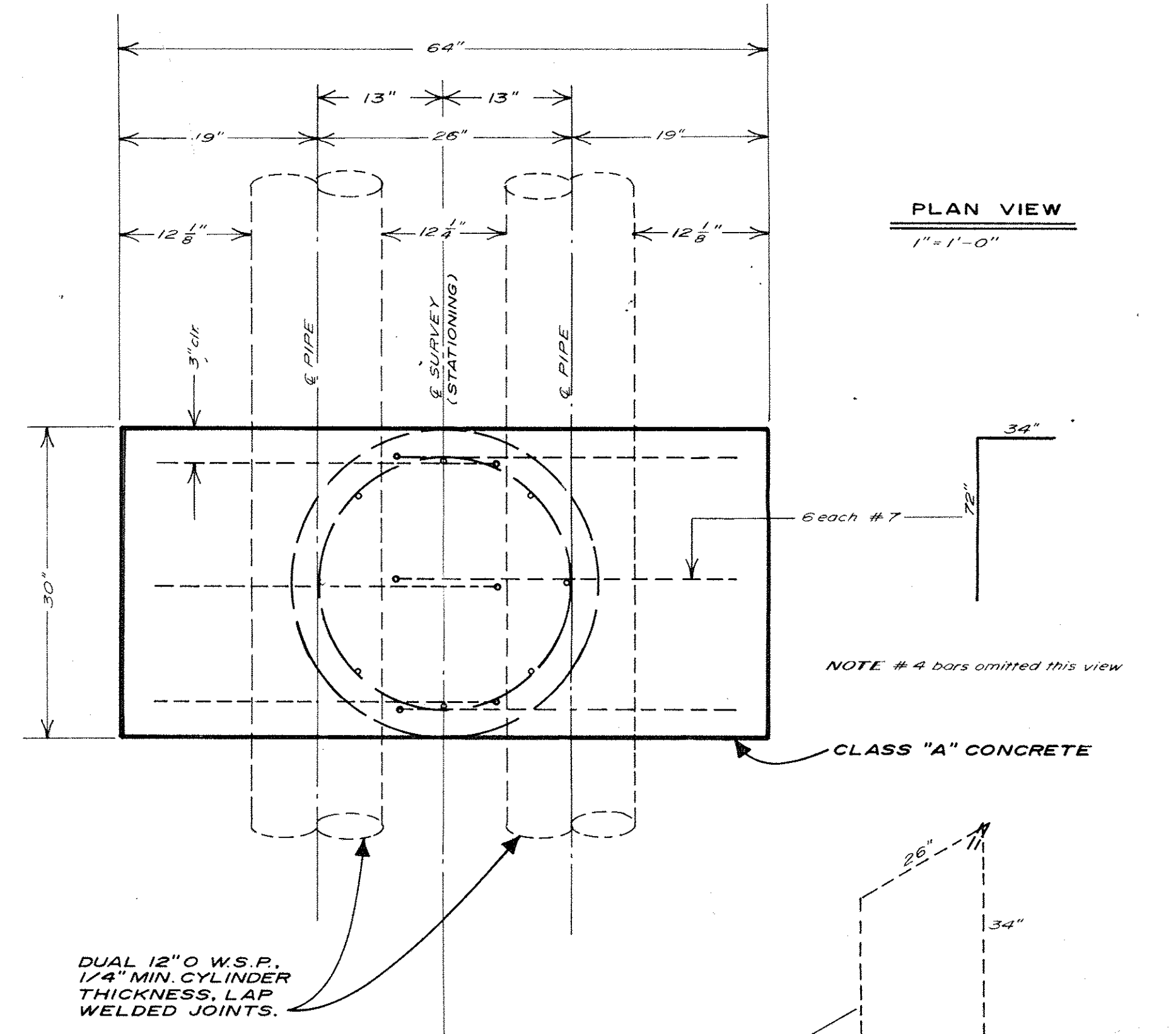
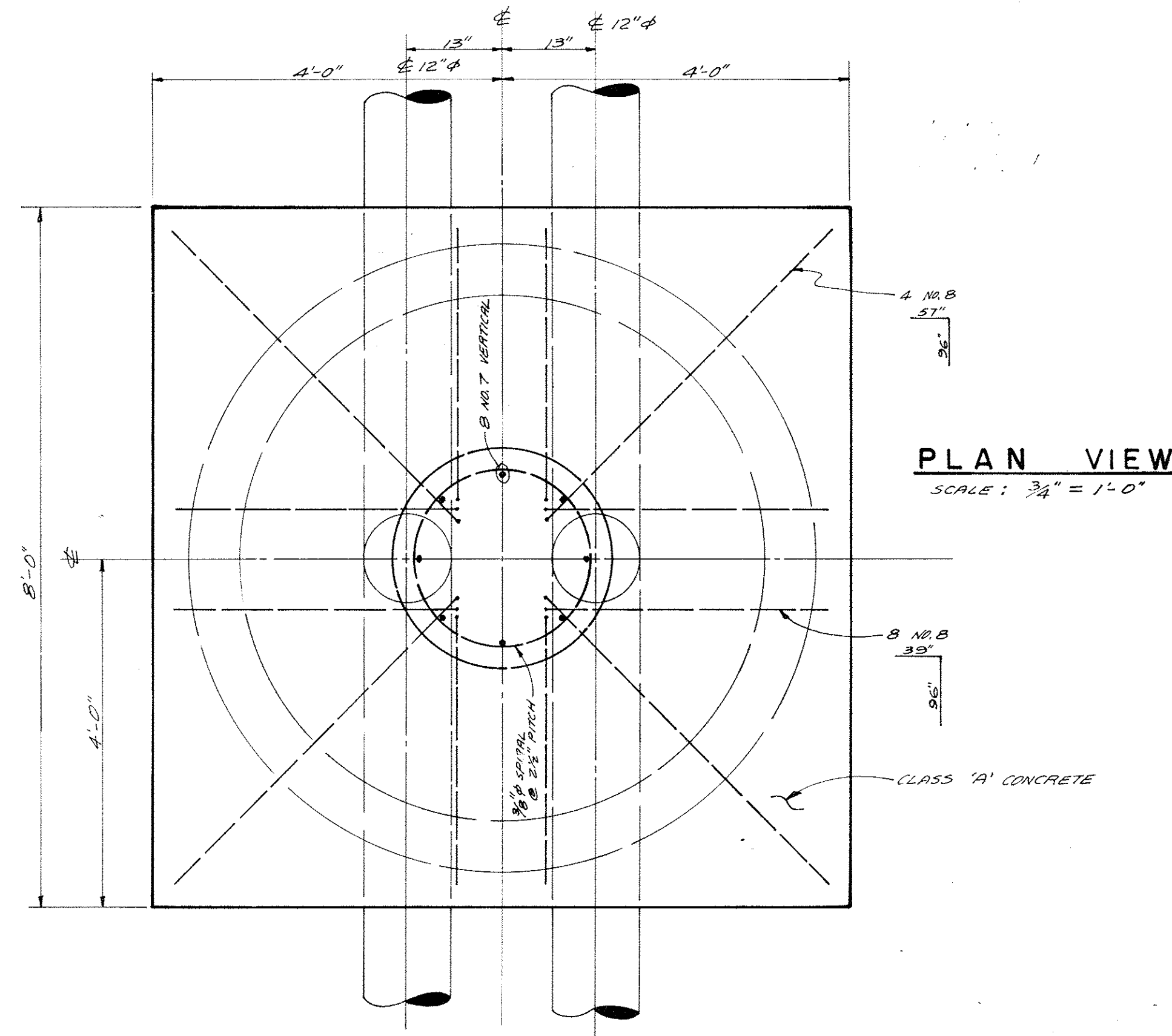
\* PER SEISMIC PROFILE CONDUCTED ON 6-8-77 BY GEOTECHNICAL CONSULTANTS, INC. BEDROCK VELOCITIES WERE CALCULATED AT APPROX. 15,000 FT./SEC.

B.M. = 719.939	Chiseled "X" on Top NW Corner of Conc. Vault 40' North of Control Pt. #33.
B.M. = 752.859	Chiseled "X" on W'ly Bolt - 8" Dia. Plate Cover on Gas Line, 40' South of Control Pt. #32.

NO.	DATE	INITIAL	DESCRIPTION	APP'VD.

W.O. 76-128 DESIGNED F.H.H. - D.R.B. 5/77 DRAWN D.R.B. - D.R.M. 5/77 CHECKED F.H.H. - J.K.L. 5/77	DATE 5/77	<b>ALBERT A. WEBB ASSOCIATES</b> CIVIL ENGINEERS 3768 McGRAY STREET RIVERSIDE CALIFORNIA	<b>JURUPA COMMUNITY SERVICES DISTRICT</b> RIVERSIDE COUNTY, CALIFORNIA INTERCEPTOR SEWER MAIN TO CITY OF RIVERSIDE WATER QUALITY CONTROL PLANT	SHEET <b>13</b> OF 14 SHEETS DWG. NO. 76-128
APPROVED BY: <i>[Signature]</i> DATE: 5-27-77		APPROVED BY: _____ DISTRICT ENGINEER DATE		DATE: 5-27-77





**REINF. CONC. CAISSON AND PIER CAP  
DETAIL FOR 72" I.D. MANHOLE**

**Reinf. Conc. Caisson and  
Pier Cap Details**

AS BUILT 1984  
A.A. Webb & Assoc.

W. O. 76-128		DATE	ALBERT A. WEBB ASSOCIATES	JURUPA COMMUNITY SERVICES DISTRICT	
DESIGNED J.K.L.		6/77	CIVIL ENGINEERS	RIVERSIDE COUNTY, CALIFORNIA	
DRAWN D.R.B.		6/77	3788 MCCRAY STREET	INTERCEPTOR SEWER MAIN	
CHECKED J.K.L.-F.H.H.		6/77	RIVERSIDE CALIFORNIA	TO CITY OF RIVERSIDE	
			APPROVED BY: <i>[Signature]</i>	WATER QUALITY CONTROL PLANT	
			DATE: 6/27/77	DETAILS	
			SCALE:	APPROVED BY: _____	
				DISTRICT ENGINEER DATE	
				SHEET 14 OF 14 SHEETS	
				DWG. NO. 76-128	